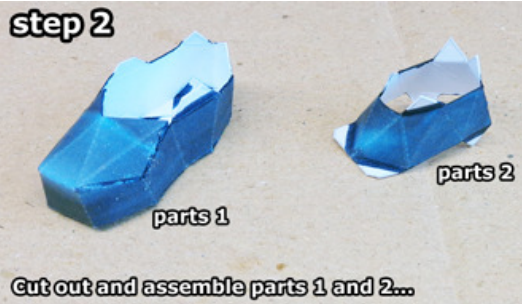


3D Duke Nukem papercraft instructions

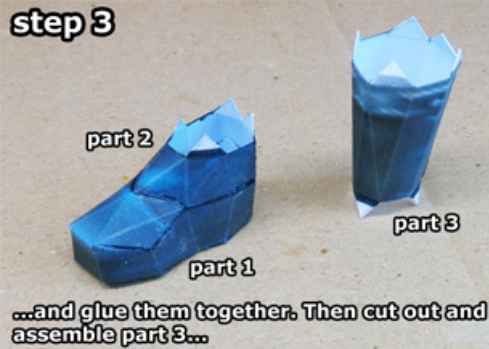
step 1



step 2



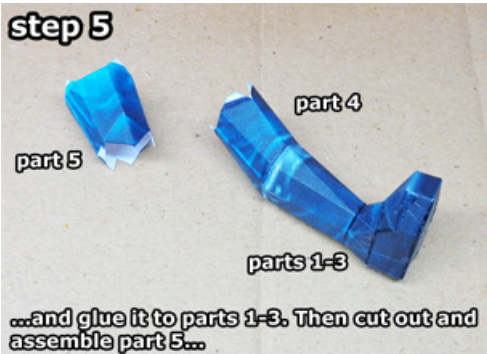
step 3



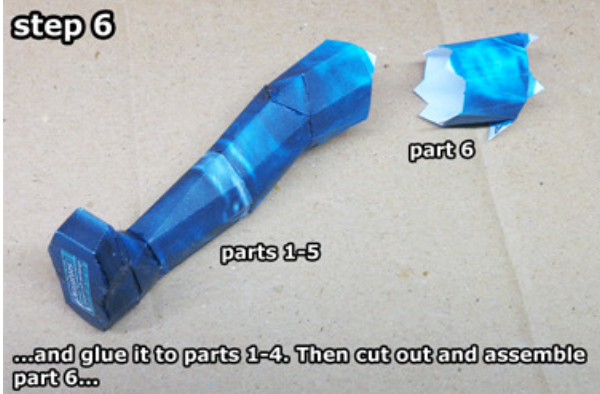
step 4



step 5



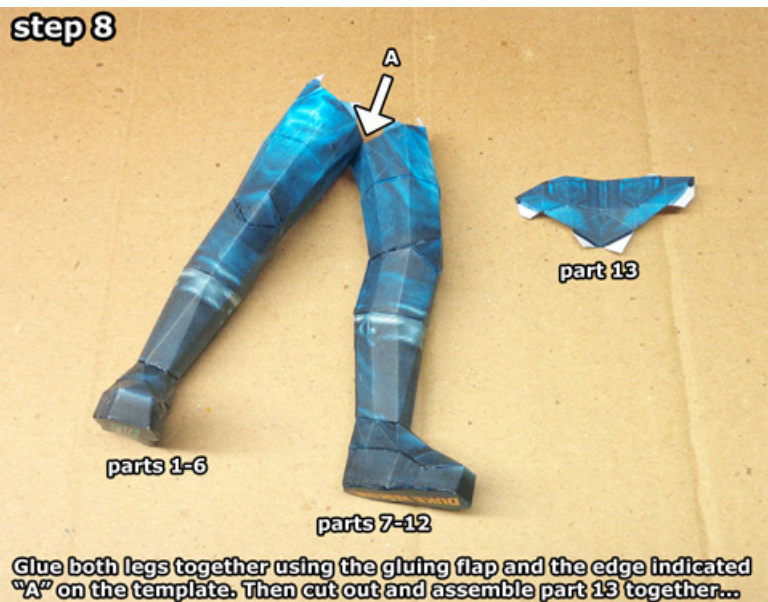
step 6



step 7



step 8



step 9



Glue part 13 to the backside of Duke's legs (that's right: it's his butt! ;op and then cut out and assemble part 14.

step 10



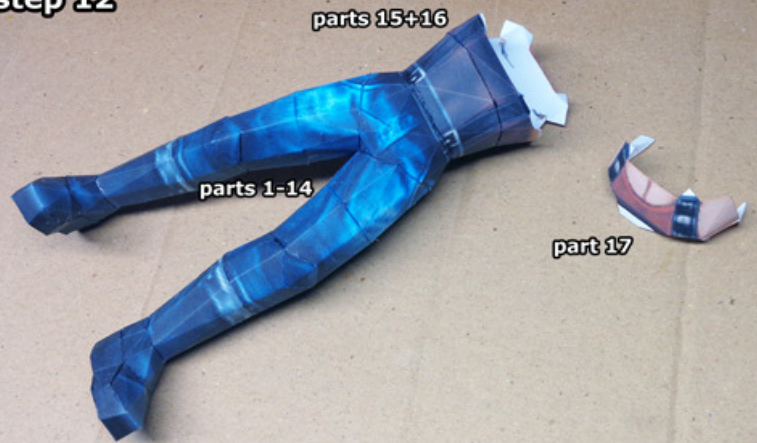
Glue part 14 to the top of Duke's jeans and cut out and assemble part 15.

step 11



Glue part 15 to Duke's jeans, and continue by cutting out and gluing together part 16.

step 12



Glue part 16 to the first part of Duke's shirt, and then cut out and glue together part 17.

step 13



Glue part 17 to the rest of Duke so far, and then cut out and glue together part 18.

step 14



Take your time to glue part 18 to the rest of Duke to connect Duke's chest and back and create his shoulders. Then cut out and glue together part 19...

step 15



...and glue it on top of Duke's shoulders as his neck.

step 16



part 20.

cut out and glue together part 20.

step 17



part 21



part 20

The fold lines can be difficult to see on the printed parts, so especially for parts with a lot of folds like Duke's arms, have a good look at the templates to make sure you don't forget any folds.

step 18



Glue together parts 20 and 21. Take your time to cut out and assemble part 22...

step 19



Glue part 22 on the rest of Duke's arm as shown here.

step 20



parts 20-22

Take your time to glue Duke's arm (parts 20-22) to his shoulder.

step 21



part 23

putting together Duke's hands can be pretty tricky, so take your time, make sure you don't forget any fold lines and pre-shape the parts the best you can.

Then personally, I like to start by pre-shaping the palm and back of the hand to match and glue them to one of the sides.

step 22



Then I do the other side...

step 23



...and then the edge marked 'G'.

step 24



This creates a triangular hole to glue on the thumb (part 24).

step 25

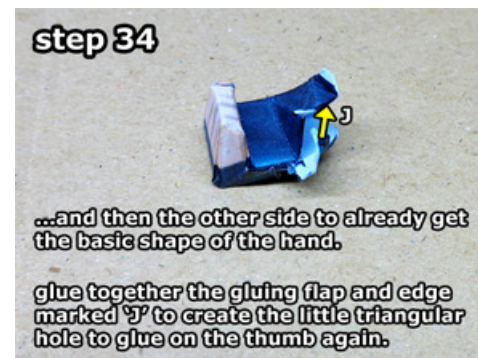
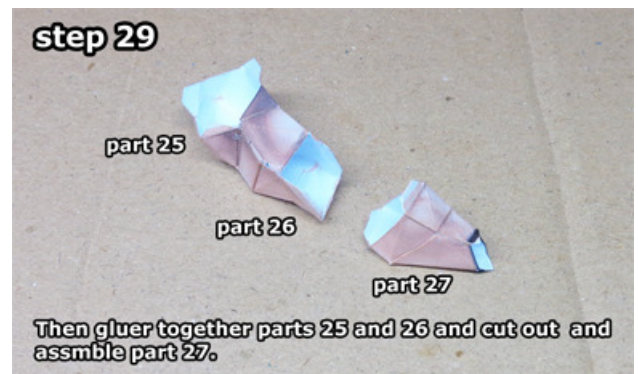
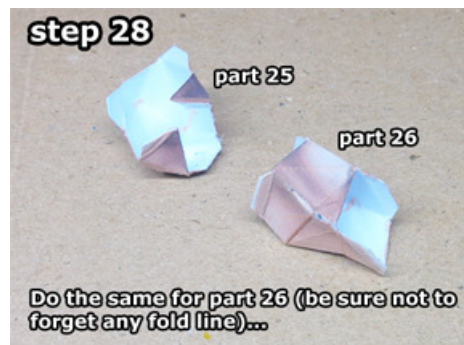
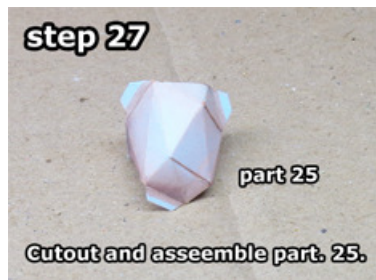


glue part 24 to part 23...

step 26



glue parts 23+24 to Duke's right arm and make sure to position it correctly as shown here.



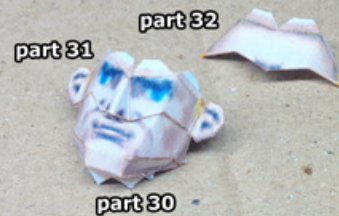
step 38



Take your time to have a good look at the templates, to make sure you don't miss any fold lines on parts 30 and 31.

Take care of the valley folds on part 32 so you can fold and shape the triangular nose.

step 39



Take your time to glue parts 30 and 31 together and cut out and fold/pre-shape part 32...

step 40



Glue part 32 to parts 30+31 and cut out and assemble Duke's hair (part 33).

step 41



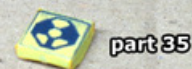
Take your time to glue FDuke's face to his hair as shown here. Then cut out his sunglasses (part 34). If you want, you can use color the backside black with a simple marker.

step 42



Take your time to glue Duke's head (parts 30-33) onto his neck and add his sunglasses. I couldn't get them to stay on without glue, so I put a small drop of glue on either end and glued them to the side of the head.

step 43



Cut out and assemble part 35...

step 44



...and then glue it to Duke's belt as shown here.

step 45

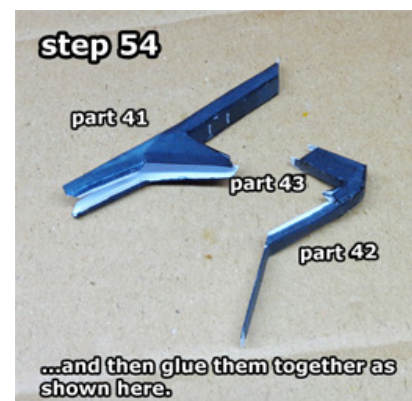
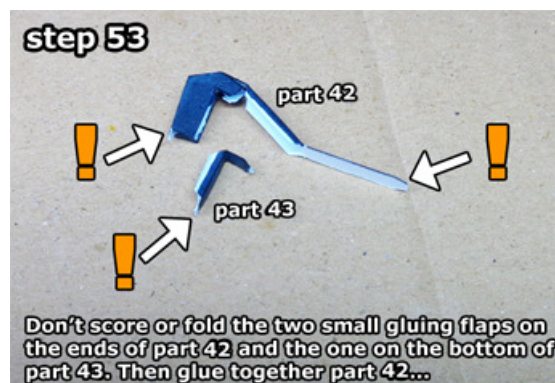
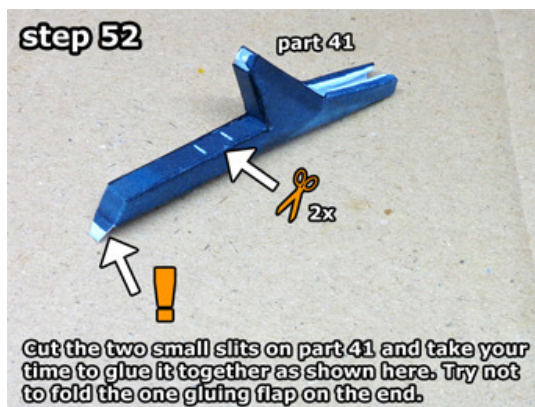
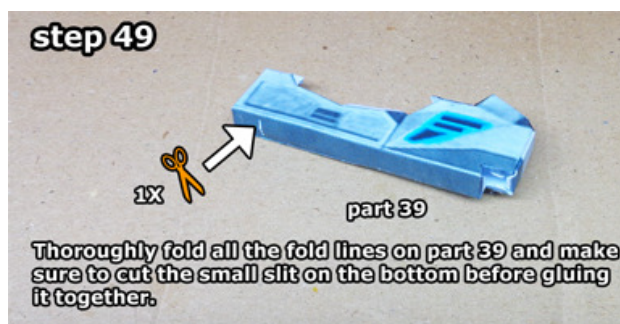
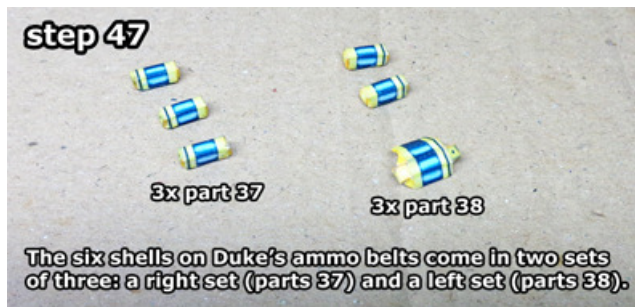


Cut out and assemble the four ammunition pockets. They're all numbered as part 36 because they're really all the same.

step 46



Glue the four ammunition pockets to the shoulder belts, two on the bottom of each side as you see here.



step 55



Glue parts 42+43 to the bottom back of part 41, while pushing the small gluing flaps through the slits to align the parts.

step 56



Glue parts 41-43 to the bottom of parts 39+40 by pushing the gluing flap on the back through the small slit again. Make sure to glue it on straight so that the frontend is centered.

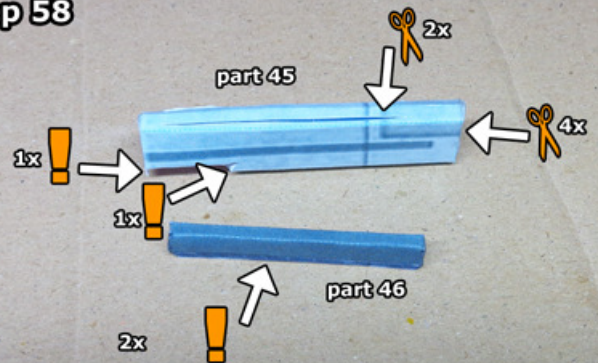
Next, cut out and glue together part 44. Don't forget the three slits though!

step 57



Glue part 44 to parts 39-40 and 41-43 by pushing the gluing flap on the front of part 41 through the slit on part 44.

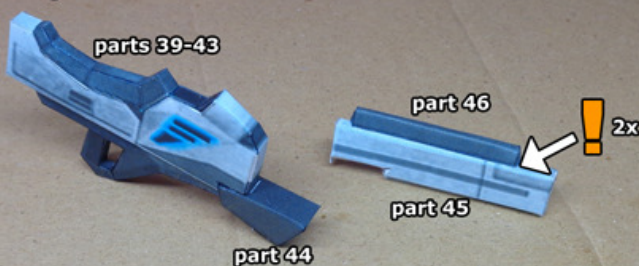
step 58



Cut out and glue together part 45. It has 2 long slits on top, and 4 small ones on the front. On the back is a gluing flap that you don't need to fold, and another small one on the small slanted corner edge on the bottom.

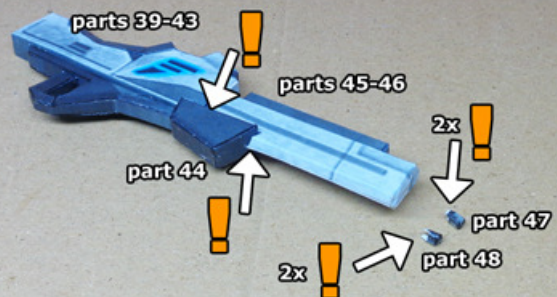
Part 46 has two long, thin gluing flaps that you don't need to fold on the bottom.

step 59



Push the two thin gluing flaps on part 46 through the long slits on top of part 45 to glue the two parts together.

step 60



Glue parts 45+46 to the rest of the gun, by pushing the two small gluing flaps on the back of part 45 through the small slits on part 44.

Then cut out and glue together parts 47 and 48. Each of them has two small gluing flaps on the bottom that you don't need to fold as well.

step 61



Glue parts 47 and 48 to the front of part 45 by pushing the small gluing flaps through the slits.

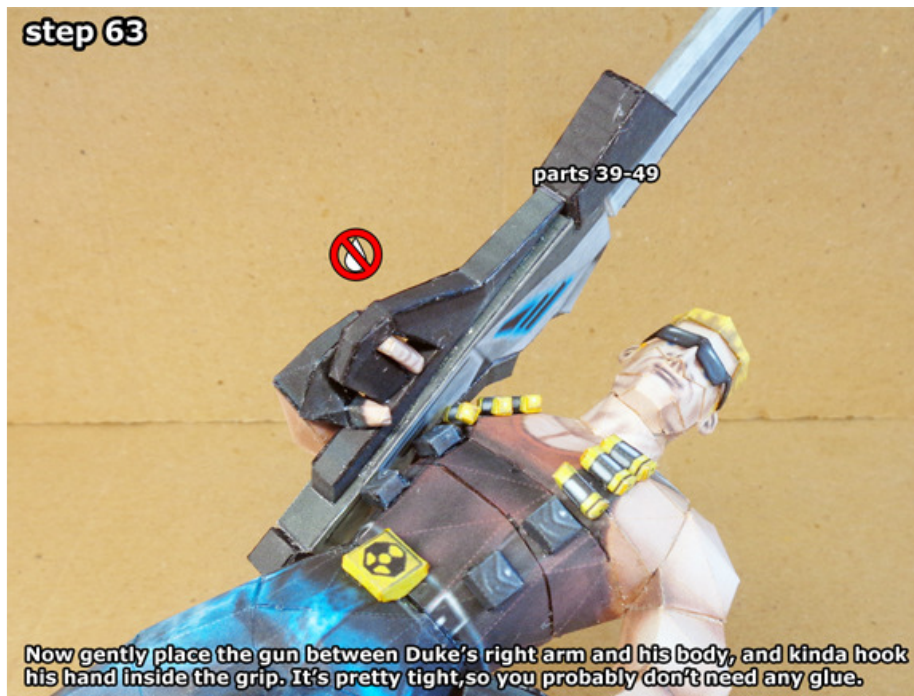
Next, cut out and assemble part 49...

step 62



...and glue it to the back of the gun!

step 63



Now gently place the gun between Duke's right arm and his body, and kinda hook his hand inside the grip. It's pretty tight, so you probably don't need any glue.

step 64



Thank you for downloading and building a ninjatoes' papercraft model!

Downloadsite: www.ninjatoes.wordpress.com

works in progress/daily downloads: www.ninjatoes.blog.spot.com